

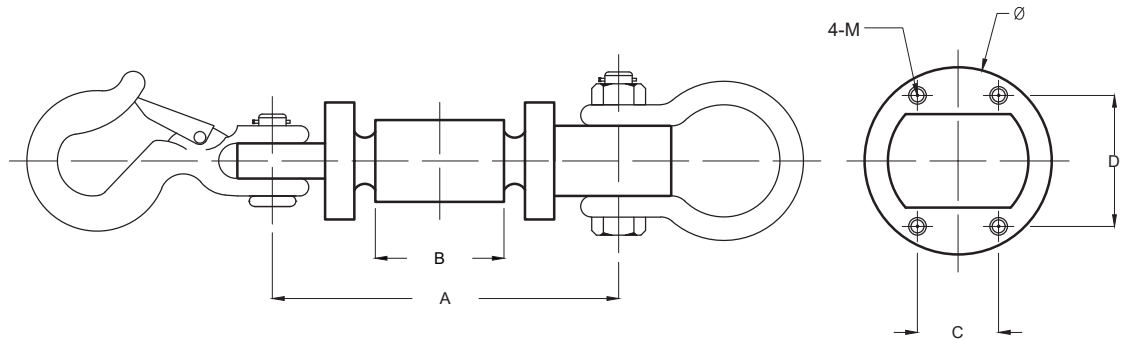
- Type:** Tension
- Material:** Alloy Steel
- Protection:** IP 67
- Features:** It has high precision, strong capability of overload protection and anti-deflective load completed hooks and rings are available
- Application:** Special load cell for crane scales



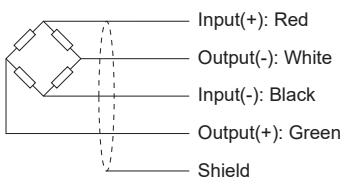
### Specifications:

Capacity		1.0t / 2.0t / 3.0t / 5.0t / 10t
Accuracy Class		<b>C3</b>
Max. Number of Verification Intervals	$n_{max}$	3000
Minimum Load Cell Verification Level	$V_{min}$	$E_{max}/7000$
Temperature Effect on Zero	%FS/10°C	$\leq \pm 0.0160$
Temperature Effect in Sensitivity	%FS/10°C	$\leq \pm 0.0180$
Combined Error	%FS	$\leq \pm 0.0230$
Creep	%FS	$\leq \pm 0.0190$
Output Sensitivity	mv/v	$1.2 \pm 0.01$
Input Resistance	$\Omega$	$385 \pm 15$
Output Resistance	$\Omega$	$350 \pm 5$
Insulation Resistance	M $\Omega$	$\geq 5000$
Zero Balance	%FS	$\leq 1.0$
Temperature, Compensated	°C	-10 ~ +50
Temperature, Operating	°C	-20 ~ +60
Excitation, Recommended	v	8 ~ 12
Safe Overload	%FS	200
Ultimate Overload	%FS	300
Standard Cable length	m	10

### Dimensions:



CAP.(t)	A	B	C	D	Φ	M
1	130	74	16	37	48	M6
2,3	150	82	22	47	62	M6
5	188	103	28	56	72	M6
10	230	120	28	66	82	M6



All dimensions: mm.