

- Type:** Compression
- Material:** Stainless Steel
- Protection:** Hermetically Sealed IP68
- Features:** Anti-Corrosion  
Low Profile
- Application:** Truck & Silo Scales  
Hopper Weigher  
Industrial Weighers

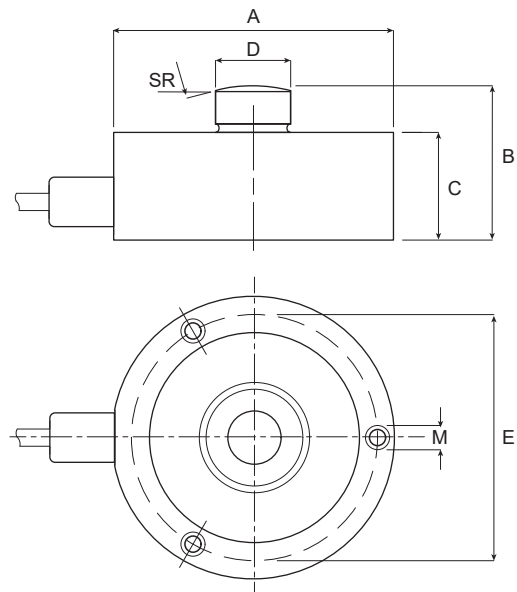
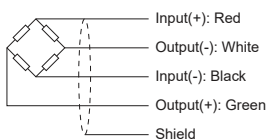


### Specifications:

Capacity		2.5t / 5.0t / 10t / 15t / 20t / 30t	
Accuracy Class		C3	C4
Max. Number of Verification Intervals	$n_{max}$	3000	4000
Minimum Load Cell Verification Level	$v_{min}$	$E_{max}/10000$	$E_{max}/14500$
Temperature Effect on Zero	%FS/10°C	$\leq \pm 0.0200$	$\leq \pm 0.0110$
Temperature Effect in Sensitivity	%FS/10°C	$\leq \pm 0.0200$	$\leq \pm 0.0090$
Combined Error	%FS	$\leq \pm 0.0200$	$\leq \pm 0.0180$
Creep	%FS	$\leq \pm 0.0200$	$\leq \pm 0.0130$
Output Sensitivity	mv/v	$2.0 \pm 0.01$	
Input Resistance	$\Omega$	$750 \pm 10$	
Output Resistance	$\Omega$	$700 \pm 5$	
Insulation Resistance	M $\Omega$	$\geq 5000$	
Zero Balance	%FS	$\leq 1.0$	
Temperature, Compensated	°C	-10 ~ +50	
Temperature, Operating	°C	-20 ~ +60	
Excitation, Recommended	v	5 ~ 15	
Safe Overload	%FS	120	
Ultimate Overload	%FS	200	
Standard Cable length	m	6.0	

### Dimensions:

CAP.(t)	A	B	C	D	E	SR	M
2.5-15SE	82	44	32	22	70	120	M8
15-30	100	48	35	28	80	120	M10



All dimensions: mm.