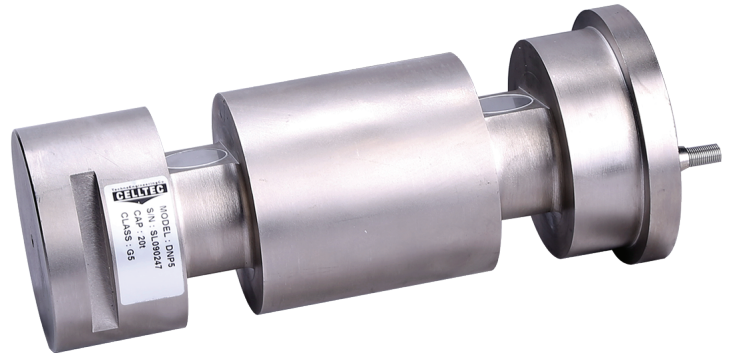


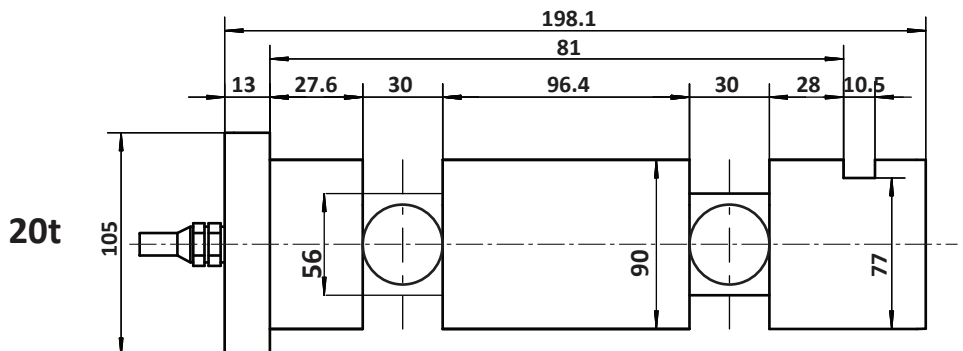
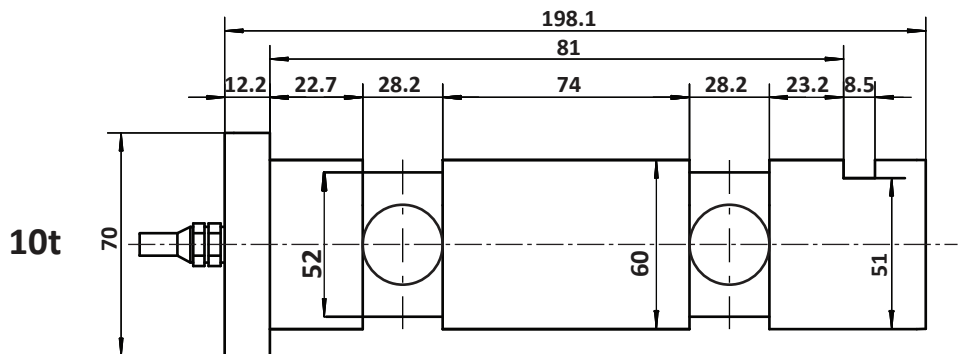
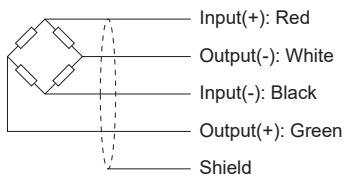
- Type:** Double Ended Beam
- Material:** Alloy Steel
- Protection:** IP 67
- Application:** Crane weighing systems where the load applied on a pin such as: crane overload control



Specifications:

Capacity		10t / 20t
Max. Number of Verification Intervals	n_{max}	200
Temperature Effect On Zero	%FS/10°C	$\leq \pm 0.1000$
Temperature Effect in Sensitivity	%FS/10°C	$\leq \pm 0.1000$
Combined Error	%FS	$\leq \pm 0.5000$
Creep	%FS	$\leq \pm 0.1000$
Output Sensitivity	mv/v	1.0 ± 0.2
Input Resistance	Ω	750 ± 10
OutPut Resist	Ω	700 ± 7
Insulation Resist	M Ω	≥ 5000
Zero Palance	%FS	≤ 1.0
Temoerature, Compensated	°C	-10 ~ +40
Temperature, Operating	°C	-30 ~ +70
Excitation, Recommended	v	5 ~ 15
Safe Overlaod	%FS	150
Ultimate Overload	%FS	200
Satndard Cable Lengthh	m	8.0

Dimensions:



All dimensions: mm.