

- Type:** Compression
- Material:** Alloy Steel
- Protection:** IP 67
- Features:** Special High Capacity  
Hermetically Sealed Structure  
Low Profile Design  
Fast Dynamic Response
- Application:** Vessels weighing  
Force Measurement  
Tank and silo  
Process weighing

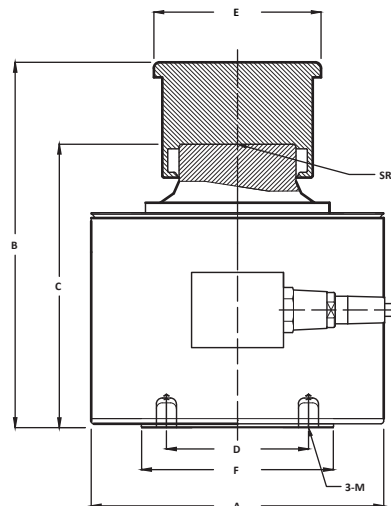
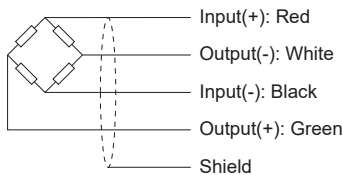


### Specifications:

Capacity		200t / 500t / 700t / 1000t
Accuracy Class		<b>C2</b>
Max. Number of Verification Intervals	$n_{max}$	2000
Minimum Load Cell Verification Level	$v_{min}$	$E_{max}/5000$
Temperature Effect on Zero	%FS/10°C	$\leq \pm 0.0300$
Temperature Effect in Sensitivity	%FS/10°C	$\leq \pm 0.0200$
Combined Error	%FS	$\leq \pm 0.0300$
Creep	%FS	$\leq \pm 0.0200$
Output Sensitivity	mv/v	$2.0 \pm 0.005$
Input Resistance	$\Omega$	$1165 \pm 10$
Output Resistance	$\Omega$	$1050 \pm 5$
Insulation Resistance	M $\Omega$	$\geq 5000$
Zero Balance	%FS	$\leq 1.0$
Temperature, Compensated	°C	-10 ~ +50
Temperature, Operating	°C	-20 ~ +60
Excitation, Recommended	v	5 ~ 15
Safe Overload	%FS	120
Ultimate Overload	%FS	150
Standard Cable length	m	12.0

### Dimensions:

CAP.(t)	A	B	C	D	E	F	SR	M
200	150	190	150	72	88	100	600	M10
500	235	290	230	130	150	170	800	M16
700	265	330	260	160	168	200	1000	M18
1000	320	400	320	200	190	260	1500	M20



All dimensions: mm.