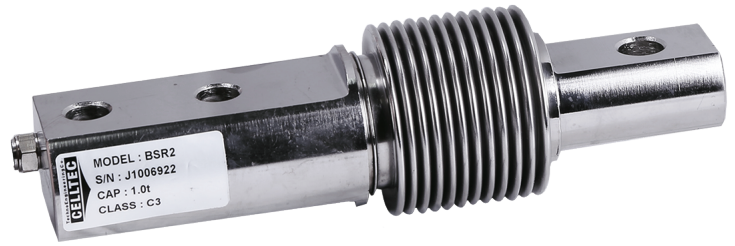


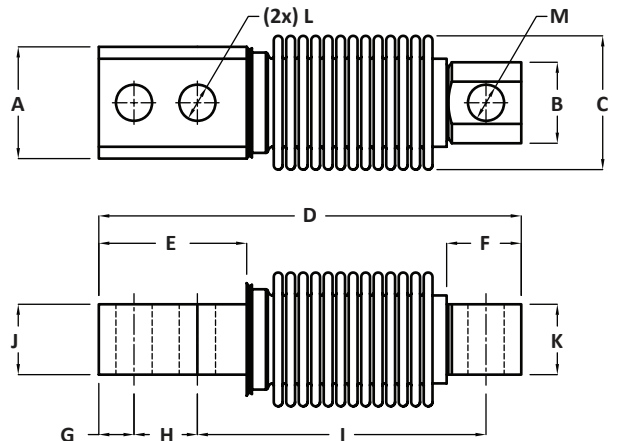
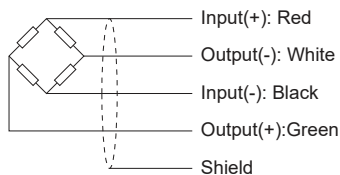
- Type:** Single Ended Beam
- Material:** Stainless Steel
- Protection:** IP 67
- Features:** Low Profile  
Nice Exterior
- Application:** Belt Weighing  
Hostile Environments  
Loss in Weight Feeders  
Marine Scales  
Food Industries



### Specifications:

Capacity		20kg / 50kg / 100kg / 200kg / 350kg / 500kg / 1.0t
Accuracy Class		<b>C3</b>
Max. Number of Verification Intervals	$n_{max}$	3000
Minimum Load Cell Verification Level	$v_{min}$	$E_{max}/10000$
Temperature Effect on Zero	%FS/10°C	$\leq \pm 0.0180$
Temperature Effect in Sensitivity	%FS/10°C	$\leq \pm 0.0180$
Combined Error	%FS	$\leq \pm 0.0200$
Creep	%FS	$\leq \pm 0.0190$
Output Sensitivity	mv/v	$2.0 \pm 0.1$
Input Resistance	$\Omega$	$385 \pm 10$
Output Resistance	$\Omega$	$350 \pm 3.5$
Insulation Resistance	M $\Omega$	$\geq 5000$
Zero Balance	%FS	$\leq 1.0$
Temperature, Compensated	°C	-10 ~ +50
Temperature, Operating	°C	-20 ~ +60
Excitation, Recommended	v	8 ~ 12
Safe Overload	%FS	120
Ultimate Overload	%FS	200
Standard Cable length	m	5.0

### Dimensions:



CAP.(kg)	A	B	C	D	E	F	G	H	I	J	K	L	M
50,100,200 ,300,500	35	26	45	123	45	19	13	18	82	22	20	8.5	8.5
1000	50	36	60	210	93	53	15	40	133	34	25	13	14

All dimensions: mm.