

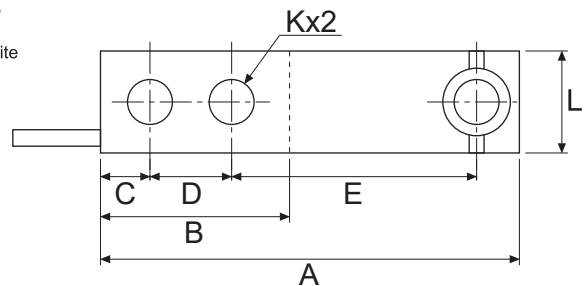
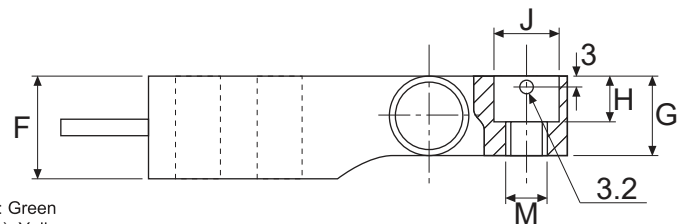
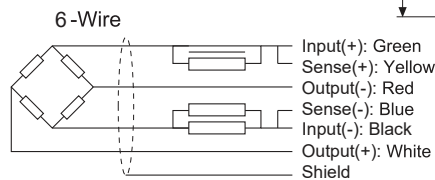
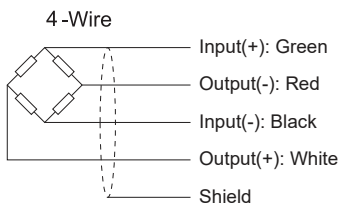
- Type:** Single Ended Beam
- Material:** Stainless Steel
- Protection:** IP 68
- Features:** Low Profile
Anti-Explosion
- Application:** Pallet Scales
Hopper Scales
Process Weighing
Food Industries
Overhead Track



Specifications:

		500kg / 1.0t / 1.5t / 2.0t / 5.0t	
		C3	C4
Capacity		500kg / 1.0t / 1.5t / 2.0t / 5.0t	
Accuracy Class		C3	C4
Max. Number of Verification Intervals	n_{max}	3000	4000
Minimum Load Cell Verification Level	v_{min}	$E_{max}/10000$	$E_{max}/14000$
Temperature Effect on Zero	%FS/10°C	$\leq \pm 0.0165$	$\leq \pm 0.0100$
Temperature Effect in Sensitivity	%FS/10°C	$\leq \pm 0.0137$	$\leq \pm 0.0095$
Combined Error	%FS	$\leq \pm 0.0230$	$\leq \pm 0.0175$
Creep	%FS	$\leq \pm 0.0165$	$\leq \pm 0.0138$
Output Sensitivity	mv/v	2.0 ± 0.02	
Input Resistance	Ω	350 ± 3.5 / 1000 ± 10	
Output Resistance	Ω	351 ± 3.5 / 1000 ± 10	
Insulation Resistance	M Ω	≥ 5000	
Zero Balance	%FS	≤ 1.0	
Temperature, Compensated	°C	-10 ~ +40	
Temperature, Operating	°C	-30 ~ +70	
Excitation, Recommended	v	5 ~ 15	
Safe Overload	%FS	150	
Ultimate Overload	%FS	300	
Standard Cable length	m	6.0	

Dimensions:



CAP.(t)	A	B	C	D	E	F	G	H	L	J	K	M
0.5	130	57.1	15.5	25.4	76.2	31.8	26	14.2	31.8	20.5	13	M12x1.75
1.0	130	57.1	15.5	25.4	76.2	31.8	27.95	14.2	31.8	20.5	13	M12x1.75
1.5,2.0	130	57.1	15.5	25.4	76.2	35.9	31.95	14.2	31.8	20.5	13	M12x1.75
5.0	172	76.2	19.1	38.1	95.3	44	40	20	38	30.2	20.5	M20x2

All dimensions: mm.